

North Baltimore Local Schools

E.A. Powell Elementary
500 N. Main Street
North Baltimore, OH
45872

Phone: 419-257-2124
Fax: 419-257-3044
www.nbls.org



Mark Lange
Principal
mlange@nbls.org

Kathi Bucher
Administrative Assistant
kbucher@nbls.org

STUDENT PICK-UP CHANGES

Dear parents,

Student safety at Powell has always been our top priority. I have some significant concerns about the manner in which students are picked up after school at the south end of the building in the circle drive. Heavy traffic and large numbers of students are never a good combination. To insure the safety of departing students and to alleviate traffic congestion, I will be implementing some changes to the pick-up procedures as of Monday, August 21st. Please read over this letter carefully so you are familiar with these changes. The North Baltimore Police, Mr. Delaney, and myself will be directing traffic for the first week.

If you have any questions after reviewing the map on the back, please feel free to call the school at 419-257-2124.

Yours in education,

A handwritten signature in black ink, appearing to read "Mark Lange", written over a series of overlapping loops.

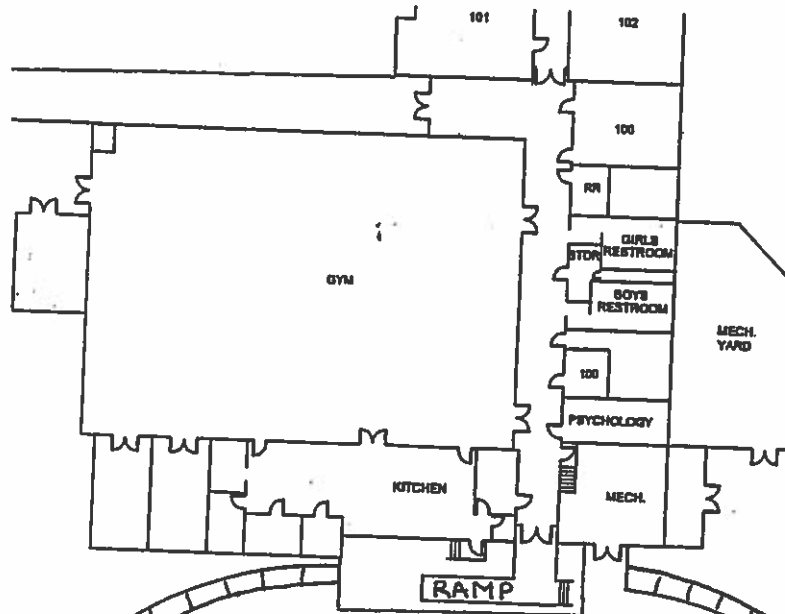
Mark Lange
Principal

New Pick-Up Procedures

- To enter the circle drive, you must be heading west on Cherry St. and make a right-hand turn into the parking lot. Drivers traveling east on Cherry St. WILL NOT be allowed to make a left-hand turn into the circle drive.
- There will be a new designated pick-up area (see map.) Students will only be released to load cars located in the pick-up area.
- Please get your children situated and buckled as quickly as possible to allow the line to keep moving.
- When exiting the circle drive, all drivers MUST turn left onto Cherry St.
- Parents must remain in their vehicles at all times. There will be no parking in the circle drive or on Cherry St. Should you wish to park your car, you must park along Main St. or in front of the school.

** See Map On Back **

Main St.



Loading Zone

Do Not Park
Do Not Exit
Your Vehicle

Enter

Must Turn Left when exiting

Cherry St.



No Left
Turns
Into The
Circle Drive